

Lower Mississippi

Cache River National Wildlife Refuge

Arkansas



CACHE RIVER NATIONAL WILDLIFE REFUGE | MICHAEL A. KELLY

The Lower Mississippi Alluvial Plain is a wildlife enthusiast's paradise. Its rich soil, seasonal flooding, meandering rivers and a long, hot growing season create a diversity of habitat types. Forests, wetlands, and agricultural lands support abundant waterfowl, including the nation's largest wintering population of mallard ducks. Bottomland hardwood forests provide essential habitat for declining neotropical migratory songbirds such as Swainson's warbler, and the spring woods are alive with the trill of wood thrush passing through. Swallow-tailed kites soar above, while the search is always on for the elusive ivory-billed woodpecker. These bottomlands also support Arkansas black bear, an endangered subspecies of the American black bear.

The Cache River watershed and Bayou deView, its major tributary, is one of only fifteen wetlands systems worldwide to hold the designation of Wetlands of International Importance under the Ramsar Convention. Hunting and other recreational opportunities, supported by waterfowl and other wildlife dependent on Cache River National Wildlife Refuge, are second only to agriculture in terms of positive impact on the rural economies of Eastern Arkansas.

Land acquisition at Cache River NWR has enjoyed broad public support following the expansion of the refuge in 2013. In FY16, the U.S. Fish and Wildlife Service will acquire as much as 2,000 acres of high value habitat that also links existing protected areas, while a total of 130 willing sellers with a combined acreage of over 32,800 acres have expressed interest in working on conservation transactions with the U. S. Fish and Wildlife Service. In addition, the Service is targeting properties that offer the opportunity for reforestation partnerships with the NRCS Wetlands Reserve Program, The Nature Conservancy, and The National Wild Turkey Federation.

Request Summary

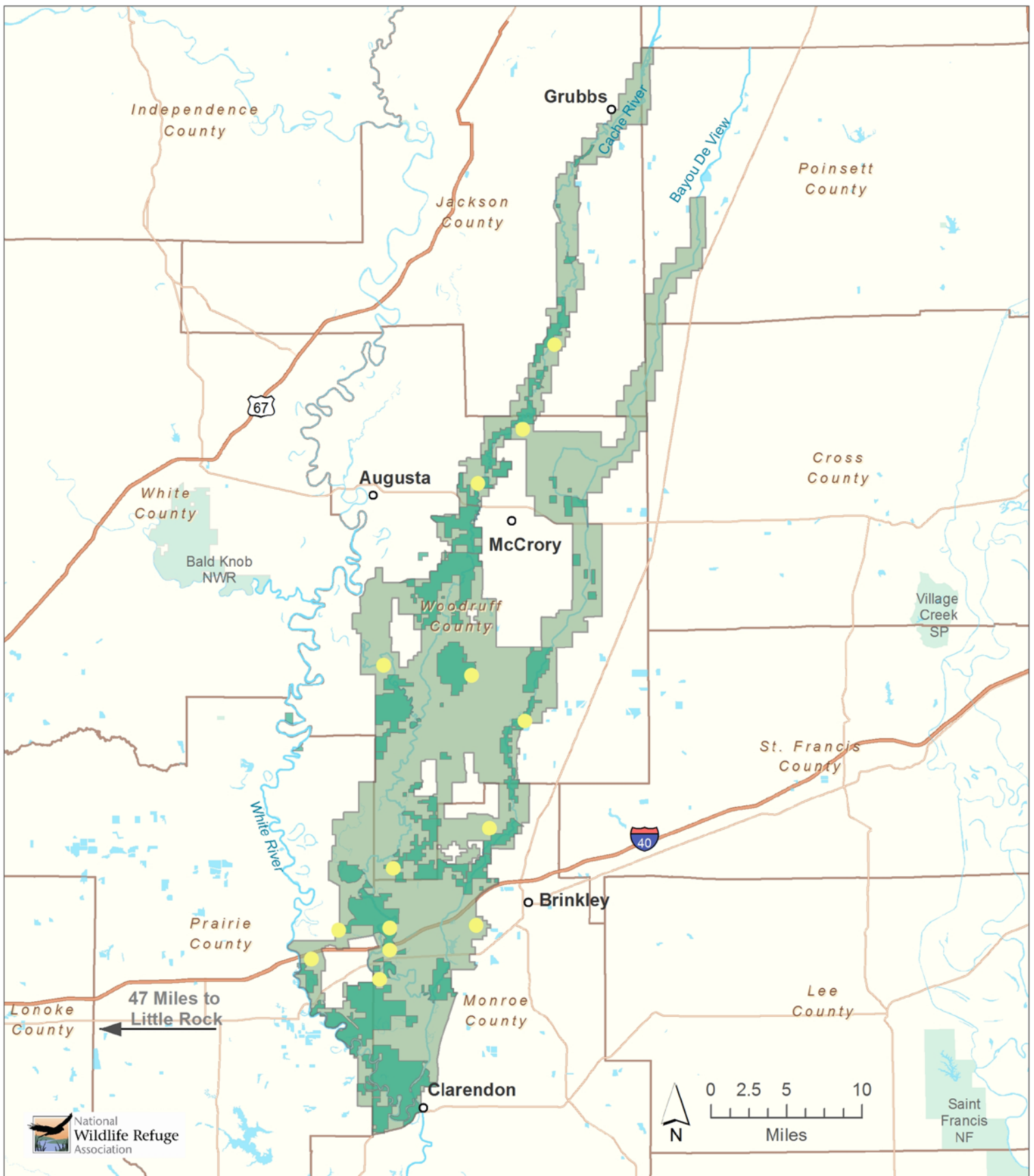
Source:	Land and Water Conservation Fund
Agency:	U.S. Fish and Wildlife Service
FY16 Request:	\$3 million
Acreage:	3,281 acres
Type:	Fee Acquisition
Counties:	Monroe, Prairie, Woodruff
Congressional District:	AR-1
Ramsar-designated "Wetlands of International Importance"	

Project Partners

- Arkansas Game and Fish Commission
- Arkansas Natural Heritage Commission
- Ducks Unlimited
- Gulf Coastal Plains Ozarks LLC
- Lower Mississippi River Valley Joint Venture
- Natural Resource Conservation Service
- National Wildlife Refuge Association
- National Turkey Federation
- The Conservation Fund
- The Nature Conservancy
- U.S. Army Corps of Engineers
- U.S. Fish and Wildlife Service

Natural Resource Values

- 256 species of migratory birds
- Wintering waterfowl
- Arkansas black bear
- 70 distinct plant communities
- 75% of the delta's aquatic species
- Cache River frontage
- Restorable agriculture lands
- Wetland Habitat



CACHE RIVER NATIONAL WILDLIFE REFUGE

- Cache River National Wildlife Refuge
- Cache River NWR Approved Acquisition Boundary
- Willing Seller FY 15 Potential Fee Acquisition



Map Date: 4/9/2014